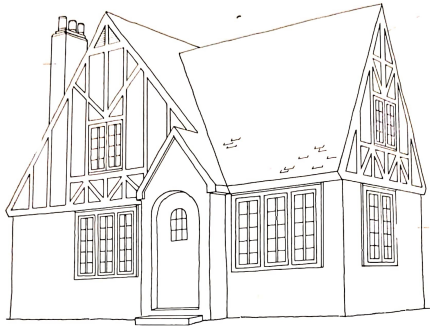


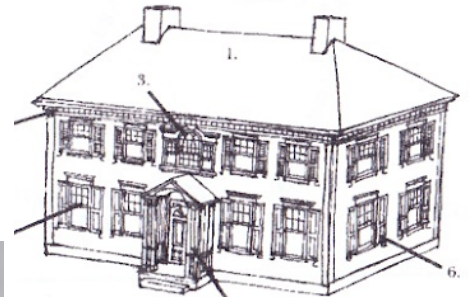
Thomas Park Historic Walking Tour



House Styles



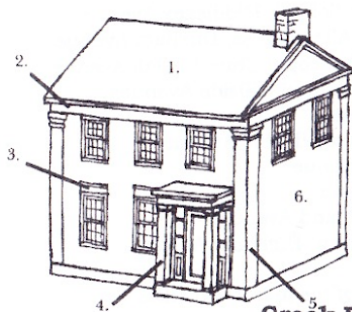
Tudor Revival



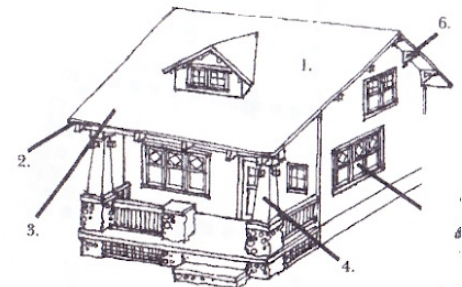
Colonial Revival



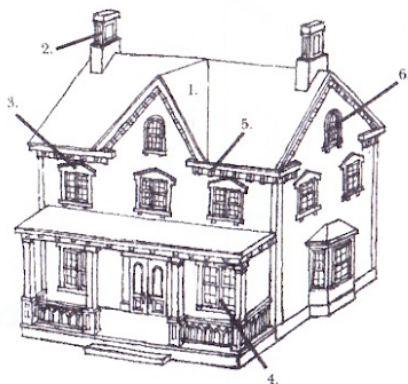
FOURSQUARE



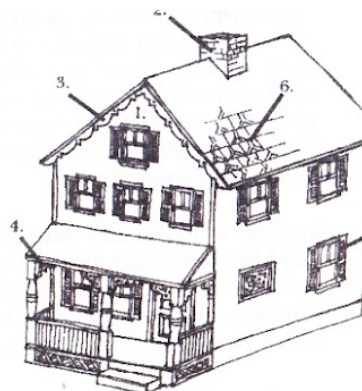
Greek Revival



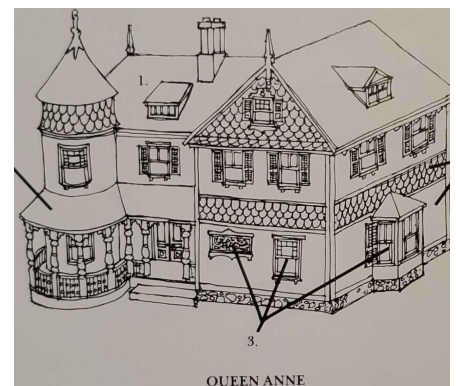
Bungalow



Italianate



Planbook/
Vernacular
Victorian



QUEEN ANNE

Scavenger Hunt

- ☐ 3 Pillars
- ☐ A horse hook up station
- ☐ A plaque about a house
- ☐ 1 person
- ☐ 1 house with green shutters
- ☐ 2 Geese
- ☐ A Colonial Revival
- ☐ 5 porches
- ☐ A Pond
- ☐ An American Flag
- ☐ A porch with no railings
- ☐ Detailing on 1 porch
- ☐ 1 Greek Revival
- ☐ 10 cars (parked or moving)
- ☐ A Tudor Revival
- ☐ 20 Windows
- ☐ 5 Bungalows
- ☐ 1 Yellow House

Historic Houses Word Search

L L D G V S G U M O P M V N T T H S G B
X W U K K Y C T L S O H K V J V D J U S
N O I V T O M M Y S P O N D M L D T D H
H M M N C G I E I X W J Q P A G T G Z Y
Y D E V D H V G V B S U Z R N Y K Q C L
D J E H B O A C Y M Z V P X S Z F L O E
I A B M J H W R M S D T Q V I M T C L F
F T V M M F N S L A O S P C O V U W O G
V L A I Z D M N J E R Z J I N Q D L N R
W V N L D Y T M S N S Y A E L K O Q I E
K V B V I G K D J I T S W B E L R Y A E
E L A I T A T N R F F J E F X O A K L K
T E B C X A N H X B M K U D R P U R Q K
Q V J T H J R A O E U M J Y G E X T S P
R D H O M Z E P T M K N J K S A E J K F
U I M R Z G V H L E A C G V U D R M E P
N O N I D W I L A O X S F A X A T Y A Y
Z O K A C D V G N E V F X U L J T D Z N
E R K N K D A B C D H G S Y T O Z H G A
J Q L Q F N L Q E J H M O S J C W S F W

Charles S Edgar

Mary W Freeman

David G Thomas

Italianate

Tommys Pond

Victorian

Colonial

Revival

Pillars

Windows

Bungalow

Mansion

Tudor

Greek

David Graham Thomas House, 59 Graham Avenue (ca. 1850)

